

Set&Go io to TaHoma pro transition



FUNKTIONEN	SET&GO IO	TAHOMA PRO	KOMMENTARE
io-Produkte erkennen (Autoscan)	X	X	
Darstellung der Gesamtanlage	X	X	
Antrieb benennen	X	X	
Endlagen einstellen / anpassen	X	X	
“MY”-Position einstellen	X	X	
Antrieb mit 1W oder 2W Funksender verknüpfen	X	X	
Sicherheitsschlüssel senden	X	X	
Daten zur Anlage (Name des Unternehmens, Installationsdatum, Benutzerdaten...)	X	-	Integration nicht geplant
Status (Eingestellt? Verknüpfte Funksender, Schlüssel, verknüpfte Sensoren...)	X	-	Erste Ebene von Informationen geplant für Juli 2024
1W Sensor hinzufügen	X	-	Geplant für Juni 2024
1W Sensor löschen	X	-	Geplant für Juni 2024
Hinzufügen / löschen Funksender	X	X	
Anzahl verknüpfte Funksender	X	-	Geplant für Q4 2024
Anzahl verknüpfte Sensoren	X	-	Geplant für Juni 2024

io-Produkte erkennen (Autoscan)

Set&Go io

1 DETECTING DEVICES - TWO-WAY (2W)

If the installation contains several two-way (2W) io-homecontrol® controls with feedback function, please be sure to gather them all.
 In the box below, select the one that you want to use first and then click "OK".
 If the control used is not shown below, select "other two-way (2W) io control".
 If the installation does not contain any control with feedback function, click "skip 2W".

OK skip 2W exit

2 DETECTING DEVICES - TWO-WAY (2W)

1. Open the TaHoma web interface or the TaHoma HD application
 2. Go to the "Configuration - Security Management" menu and click "send a security key"
 3. Once the procedure with TaHoma is complete, click "OK".

OK exit



TaHoma pro

5:21

Return

io key management

TRANSFER AN IO KEY

Receive the installation key to a control point

RECEIVE AN IO KEY

Receive an io key from a control point, and send it to the installation

GENERATE A NEW IO KEY

Generate a new io key for my entire installation

3:33

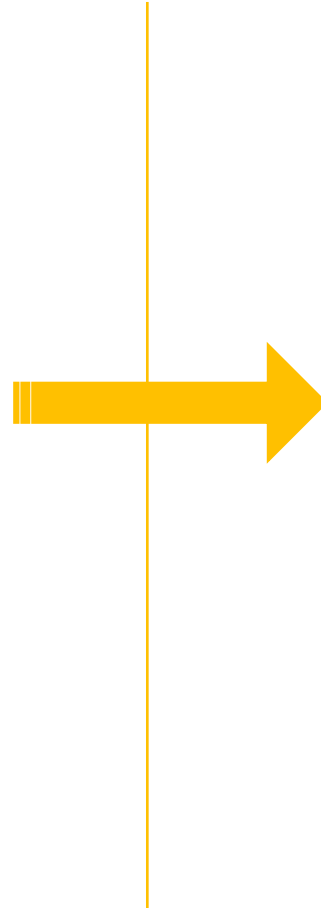
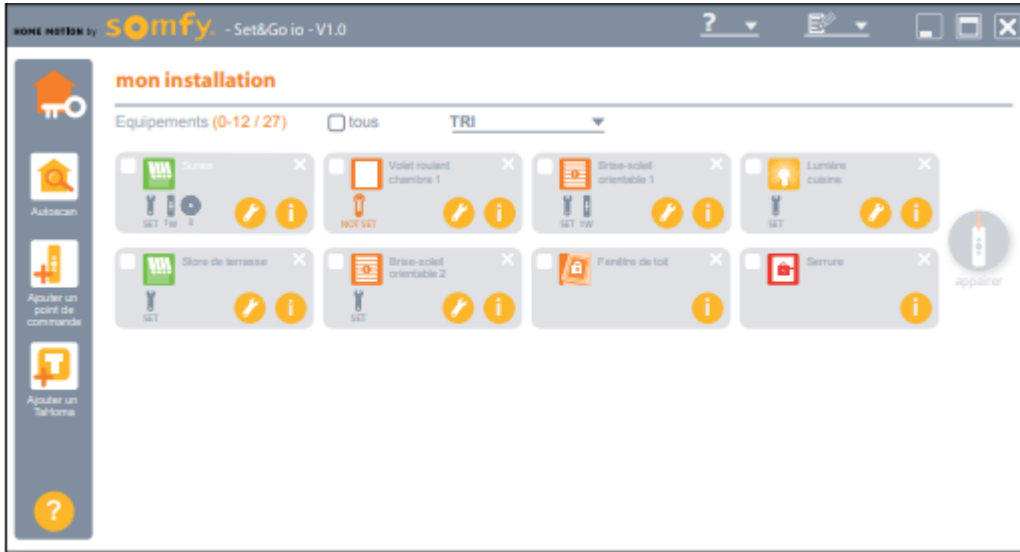
Return

Go to settings. Click "Send system system safety key"

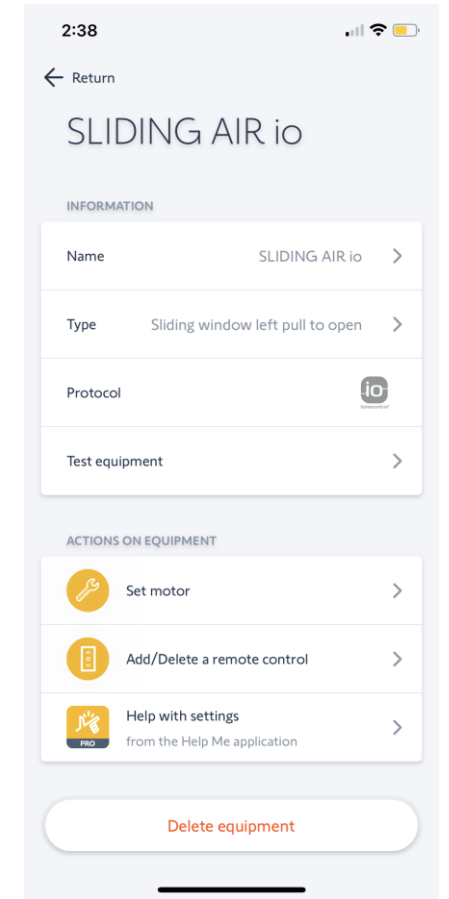
I received the key

Darstellung der Gesamtanlage

Set&Go io

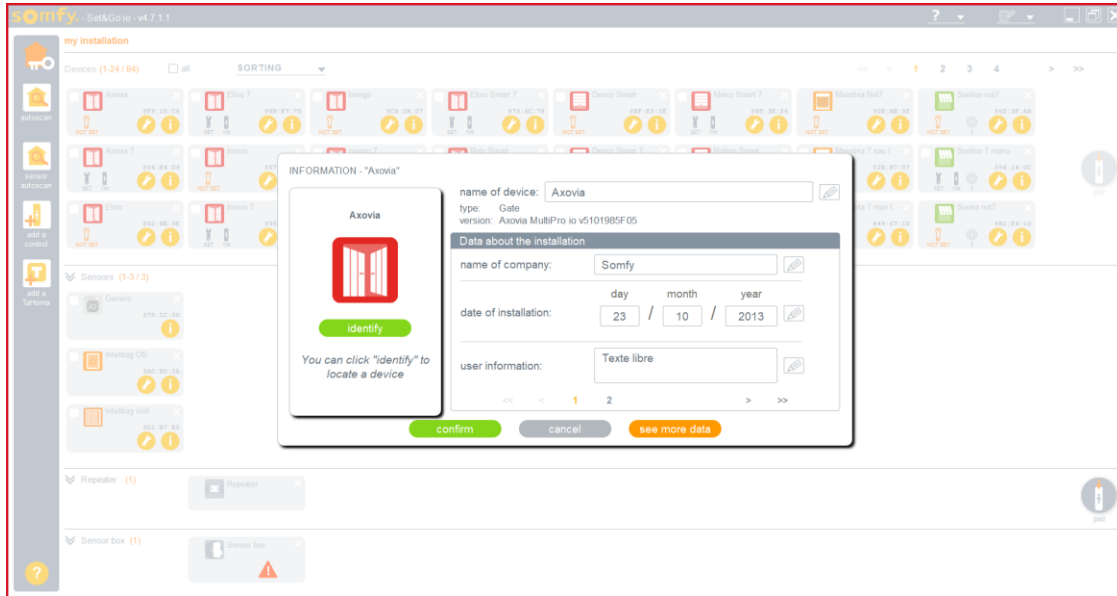


TaHoma pro

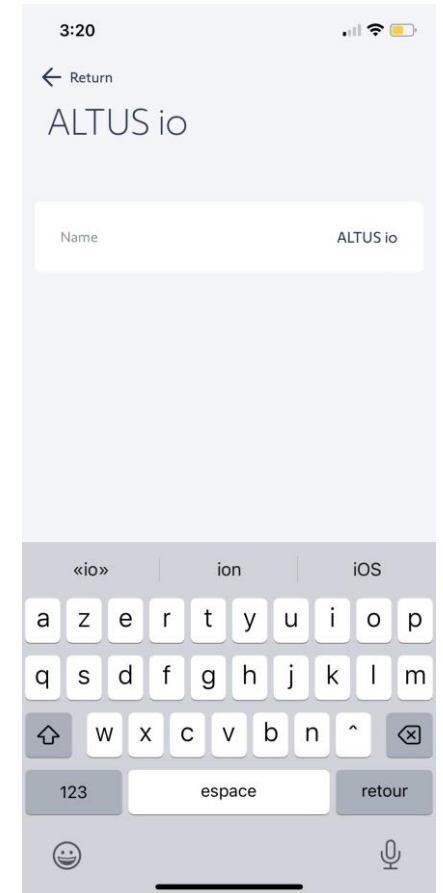
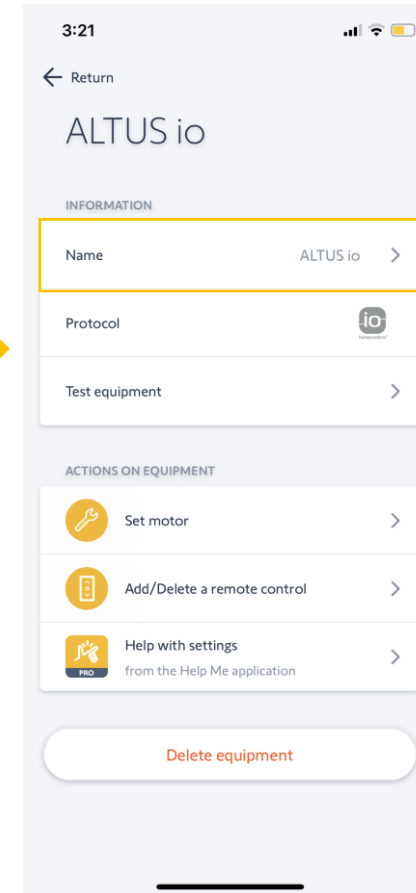


Antrieb benennen

Set&Go io

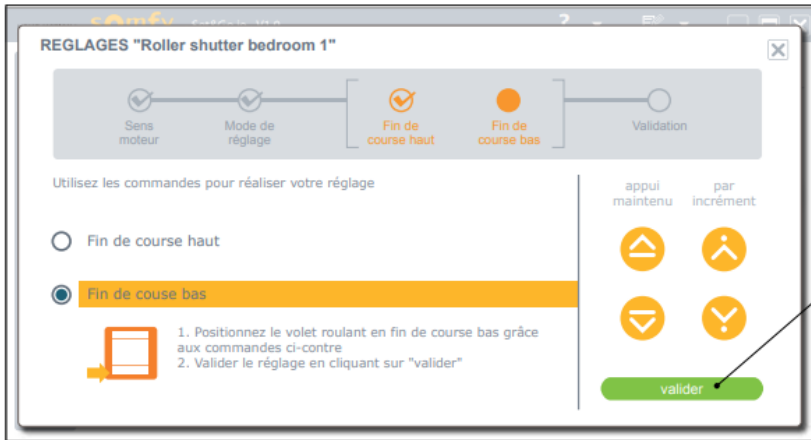
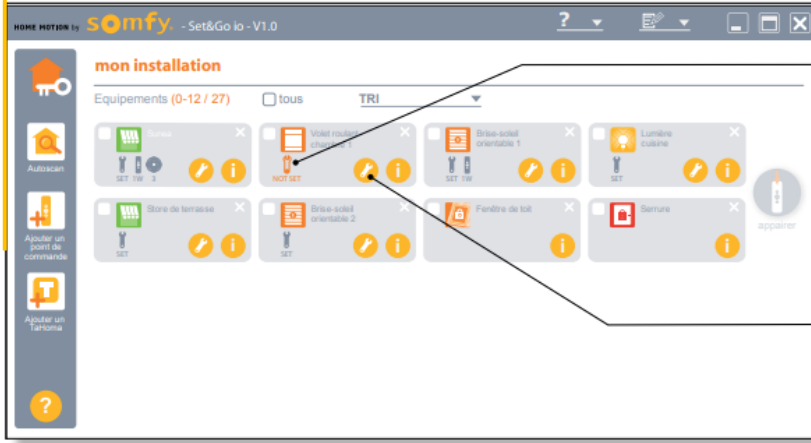


TaHoma pro

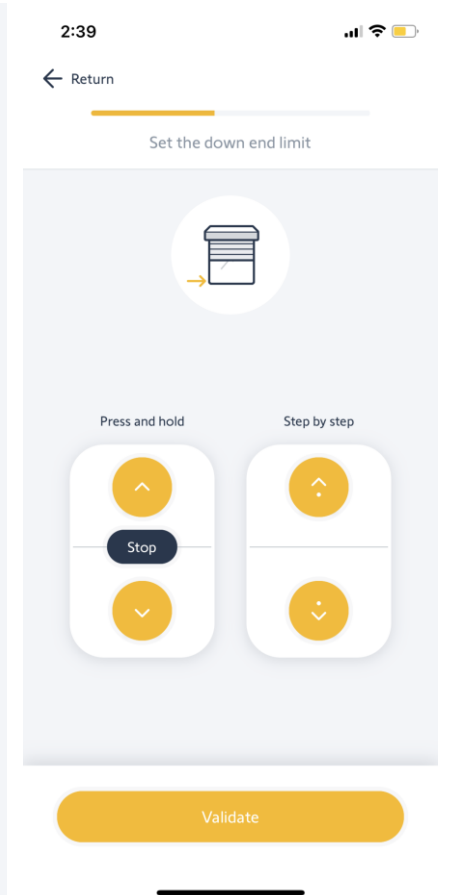
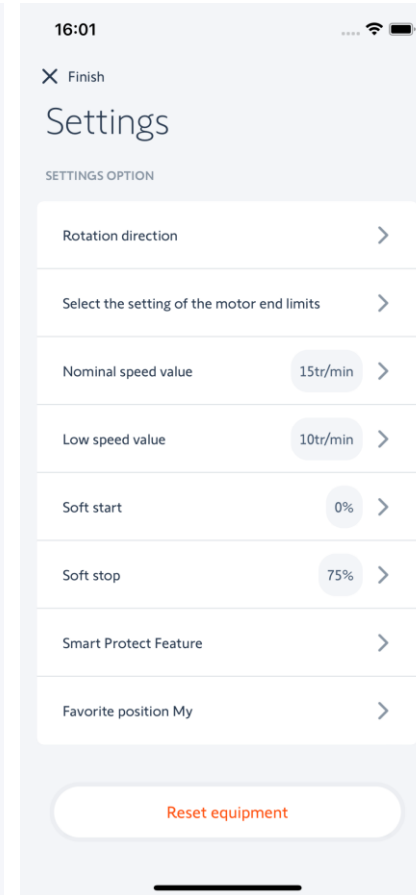
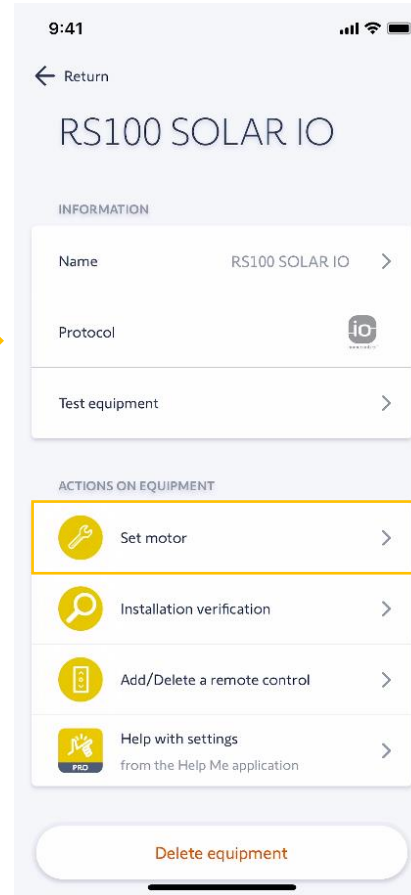


Endlagen einstellen / anpassen

Set&Go io

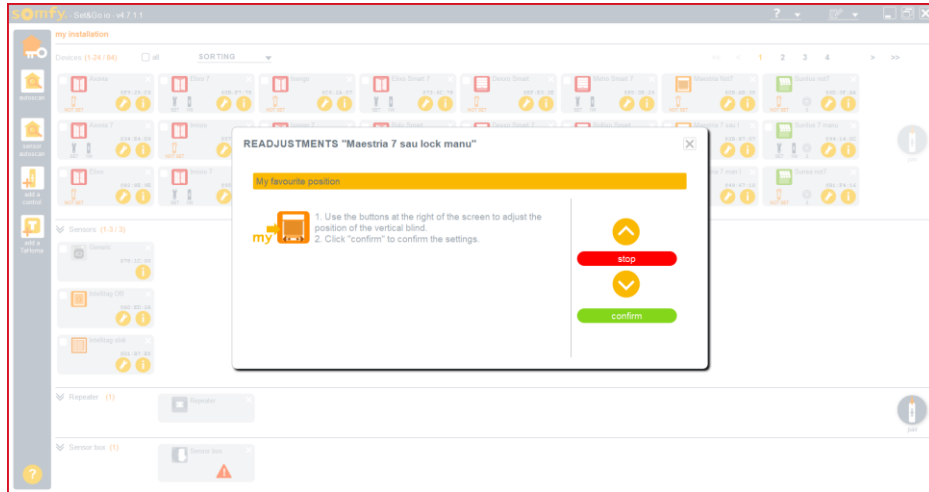
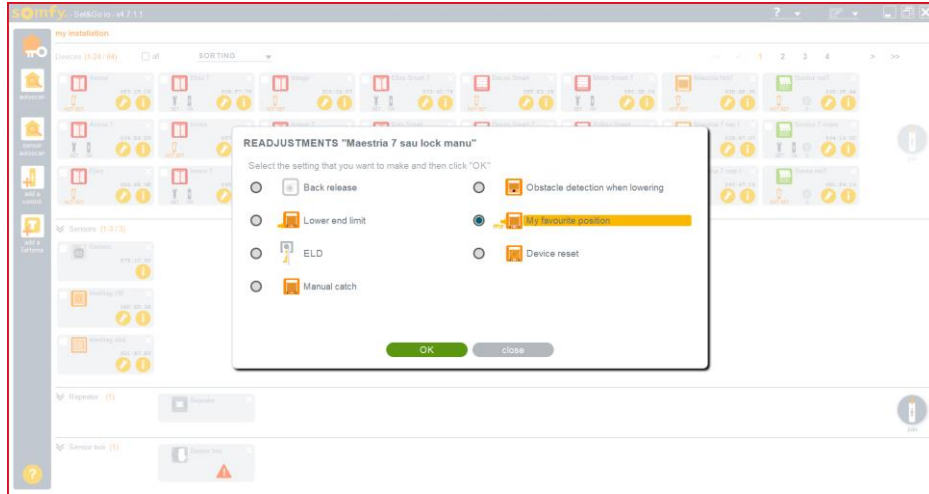


TaHoma pro

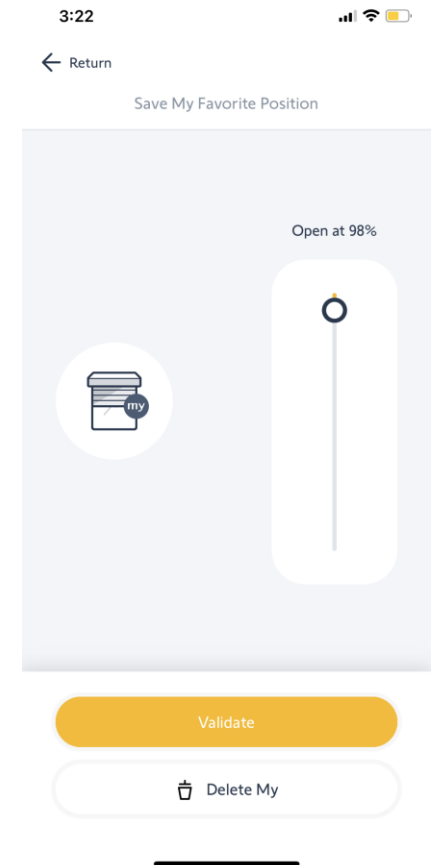
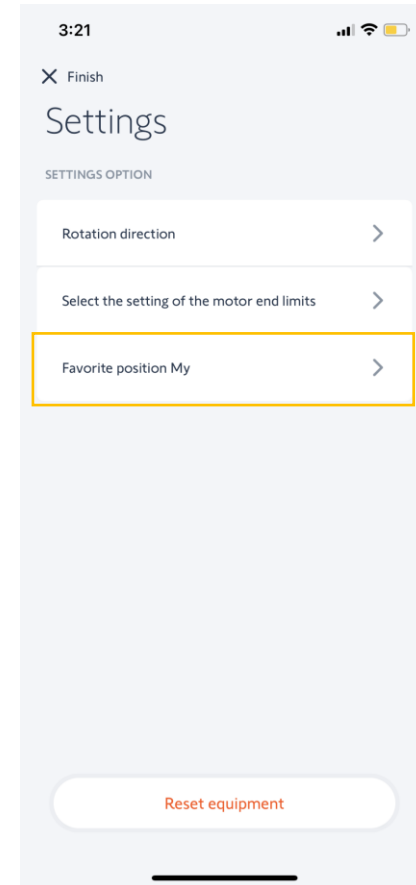


“MY”-Position einstellen

Set&Go io

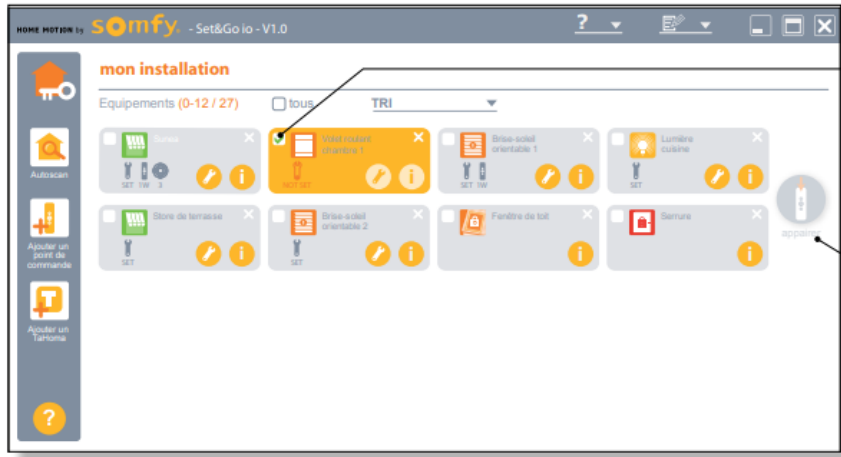


TaHoma pro

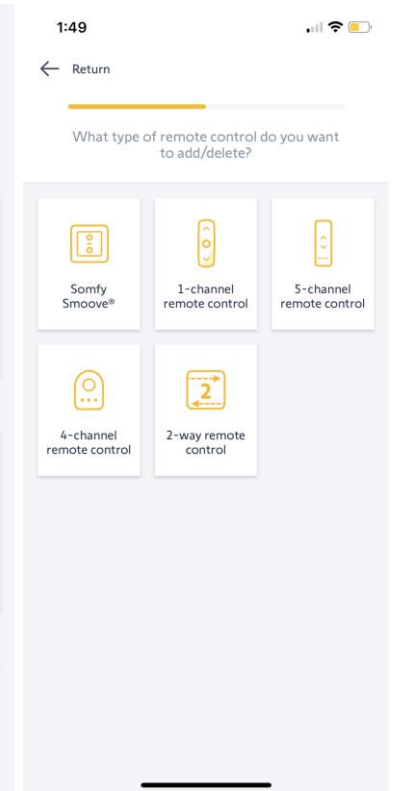
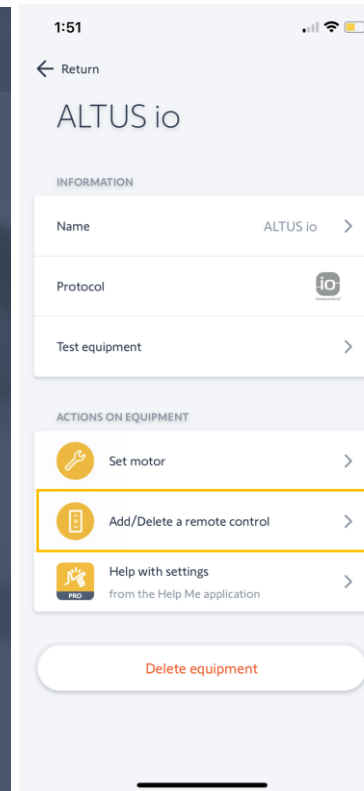
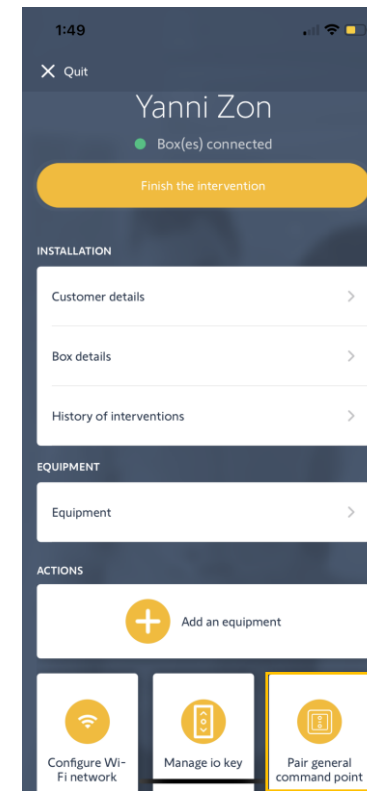


Antrieb mit 1W oder 2W Funksender verknüpfen

Set&Go io



TaHoma pro



Sicherheitsschlüssel senden

Set&Go io

1 AJOUTER UNE COMMANDE A L'INSTALLATION (Donner la clé de sécurité)



Veillez sélectionner la commande à qui vous souhaitez donner la clé de sécurité, puis cliquez sur "OK". Cliquez sur "quitter" pour sortir de la procédure.

OK quitter

2 AJOUTER UNE COMMANDE A L'INSTALLATION (Donner la clé de sécurité)

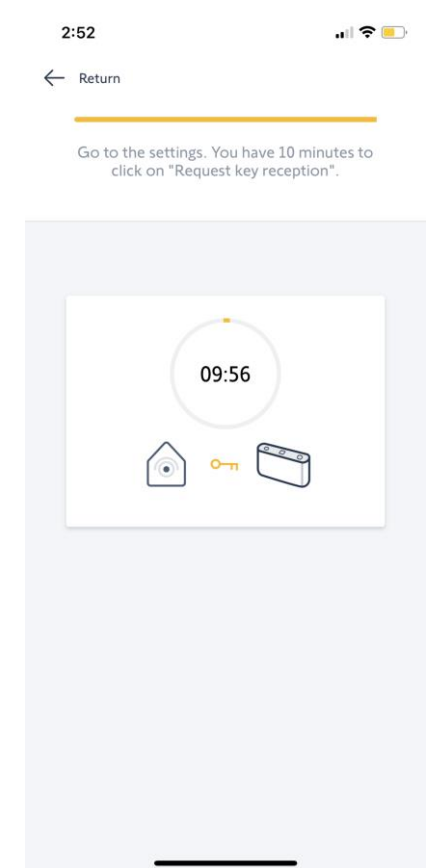
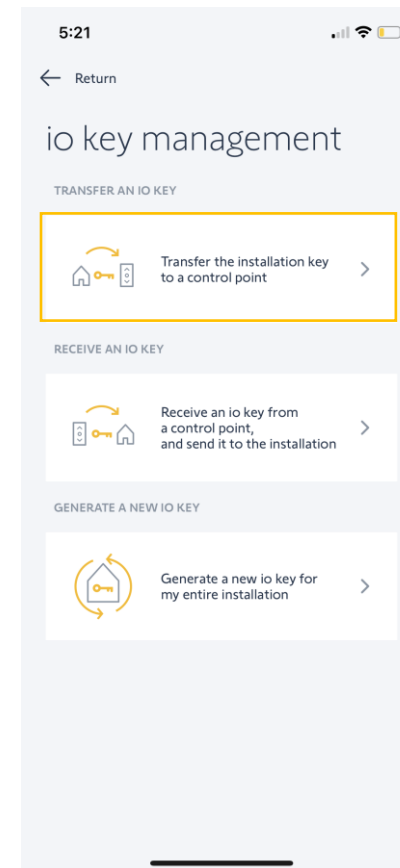


Appuyez brièvement sur le bouton "KEY" de la commande avec retour d'information.

quitter



TaHoma pro




Daten zur Anlage (Name des Unternehmens, Installationsdatum, Benutzerdaten)

Set&Go io

INFORMATION - "Axovia"

Axovia



identify

You can click "identify" to locate a device

name of device: Axovia

type: Gate

version: Axovia MultiPro io v5101985F05

Data about the installation

name of company: Somfy

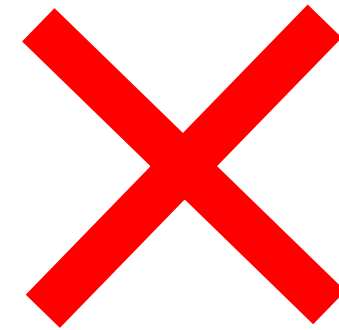
date of installation: 23 / 10 / 2013

user information: Texte libre

confirm cancel see more data



TaHoma pro



Integration nicht geplant

Status (Eingestellt? Verknüpfte Funksender, Schlüssel, verknüpfte Sensoren...)

Set&Go io

Dexxo Smart 7

GENERAL INFORMATION ABOUT THE DEVICE

io profile: "Dexxo Smart 1000 io"
Device technical reference:
Software version: 5163750A01
Electronics version:

DATA ABOUT THE INSTALLATION

Name of company: "Somify"
Date of installation: 23/10/2013
User information: "Texte libre"

CURRENT ACTUATOR STATE

Product setting: Set
Complete control wired input state: Inactive
Number of one-way (1W) controls paired with the drive: 0
Number of one-way (1W) controls paired with the drive in complete cycle mode: 0
Number of one-way (1W) controls paired with the drive in partial cycle mode: 0
Number of one-way (1W) controls paired with the lighting: 0
Number of one-way (1W) controls paired with the auxiliary output: 0
2W key present: no key

CURRENT ACTUATOR SETTINGS

Door/gate type: ?
Partial opening position: 0 %

Operating modes:

Complete cycle operating mode: Sequential
Complete cycle closing delay: 00h 00m 00s

Safety inputs:

Cells: Inactive
Cell input state: Fault detected
Last cell self-test result: Out of service
Gate contact input state: Fault detected
Last gate contact self-test result: Out of service

Speeds:

Closing speed: ?
Opening speed: ?
Closing slowing zone: ?
Opening slowing zone: ?
Closing docking speed: ?

Obstacle detection sensitivity: Very low sensitivity
Locking the programming buttons: Deactivated

HISTORY OF EVENTS OR ACTIONS DURING USE OF THE DEVICE

Number of complete cycles: 0
Number of partial cycles: 0

save as

print

close



TaHoma pro



Erste Ebene von Informationen
geplant für Juli 2024

1W Sensor hinzufügen

Set&Go io



TaHoma pro

1 PAIRING DEVICES WITH A ONE-WAY (1W) CONTROL OR SENSOR



Please select the one-way (1W) control or sensor with which you wish to pair the devices, then click "OK".
To make sure that you select the correct device, please check the logo on the back (1W or 2W).
The logo should match the logo shown next to the picture of the control or sensor.

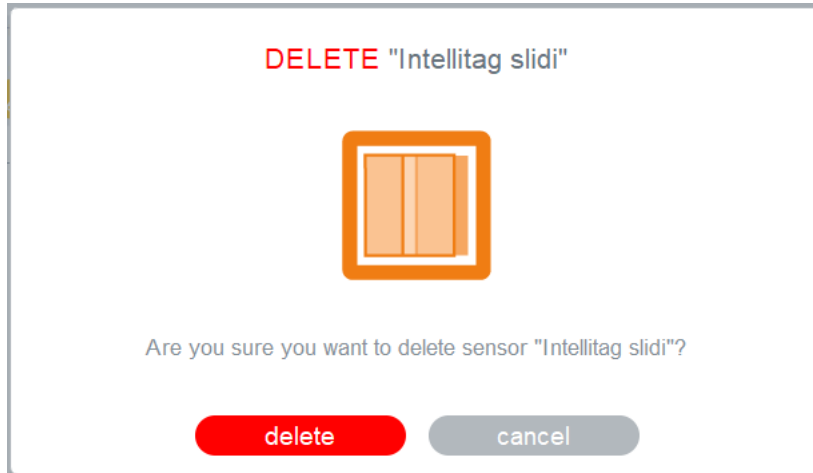
OK exit



Geplant für Juni 2024

1W Sensor löschen

Set&Go io



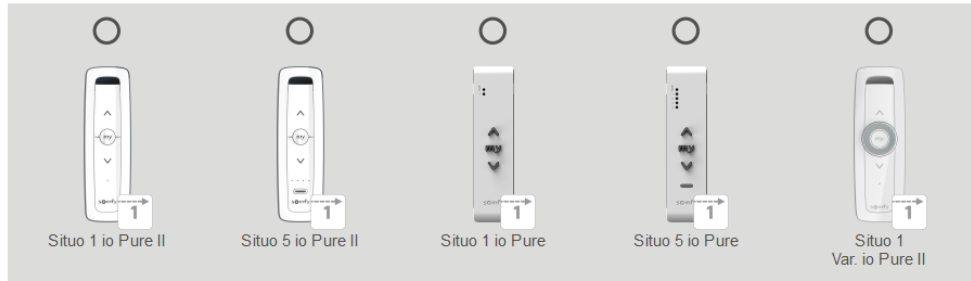
TaHoma pro

Geplant für Juni 2024

Hinzufügen / löschen Funksender

Set&Go io

1 PAIRING DEVICES WITH A ONE-WAY (1W) CONTROL OR SENSOR



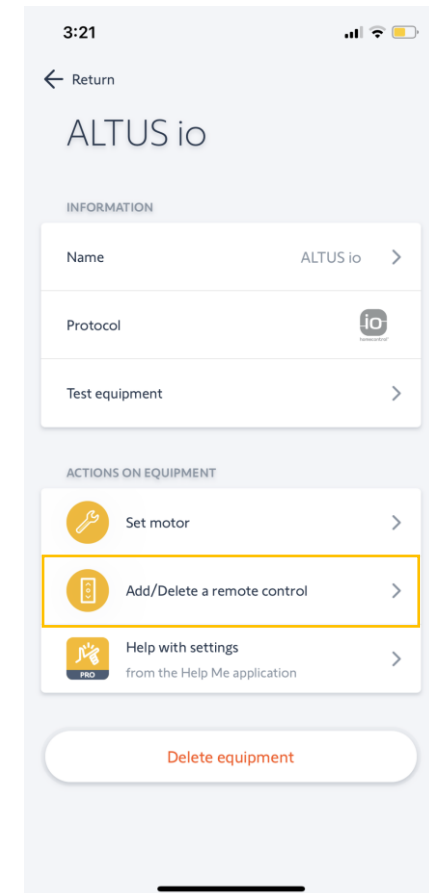
Please select the one-way (1W) control or sensor with which you wish to pair the devices, then click "OK".
To make sure that you select the correct device, please check the logo on the back (1W or 2W).
The logo should match the logo shown next to the picture of the control or sensor.

OK

exit



TaHoma pro




Anzahl verknüpfte Funksender

Set&Go io


INFORMATION - "SmvUno HAW"

SmvUno HAW



identify

You can click "identify" to locate a device

name of device: 

type: Terrace awning
version: Smoove UNO io v5125936A04

State

setting: Set

paired controls: 2 one-way (1W) controls

security: no key

paired sensors: 3 one-way (1W) sensor

<< < 1 2 3 4 5 > >>

confirm cancel



TaHoma pro


Geplant für Q4 2024

Anzahl verknüpfte Sensoren

Set&Go io


INFORMATION - "SmvUno HAw"

SmvUno HAw



identify

You can click "identify" to locate a device

name of device: 

type: Terrace awning
version: Smoove UNO io v5125936A04

State

setting: Set

paired controls: 2 one-way (1W) controls

security: no key

paired sensors: 3 one-way (1W) sensor

<< < 1 2 3 4 5 > >>

confirm cancel



TaHoma pro

Geplant für Juni 2024